



# General Fact Sheet

From our humble beginnings offering Neighbor Island trips on our three-aircraft fleet to servicing dozens of destinations in Asia, the South Pacific and the U.S. mainland, we've been honored to serve our guests for nearly a century.

## — NUMBERS —

*A legacy built on service, safety and punctuality*



**94 YEARS**  
& COUNTING

On Nov. 11, 1929, thousands gathered to witness our first scheduled flight depart Honolulu for Hilo (with a stop in Maui), using an amphibious S-38 aircraft. The trip took three hours and fifteen minutes.



**7,370\***  
EMPLOYEES

Our employees are ambassadors of their island home, and proudly welcome our guests with aloha and authentic Hawaiian hospitality.

\*As of January 2024



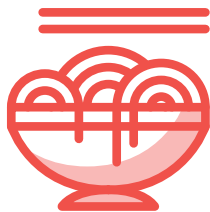
**225\***  
AVERAGE DAILY FLIGHTS

As Hawai'i's carrier, we're honored to share our warm hospitality and sense of aloha with millions of guests worldwide each year.

\*Approximate average for 1Q24

## — SERVICES —

*Authentic Hawaiian hospitality in everything we do*



**DINING**  
ISLAND-INSPIRED

Curated by award-winning chef team Wade Ueoka and Michelle Karr-Ueoka, our Featured Chef Series offers specially designed menu creations from Hawai'i's top burgeoning chefs who are redefining Hawai'i regional cuisine.



**BEVERAGES**  
HOT & COLD

We take the authentic flavors of Hawai'i to new heights with refreshing local cocktails by Kō Hana Rum and beers from Maui Brewing Co., just to name a few.



**MOVIES**  
GAMES & MORE

From the blockbusters to our exclusive island programming and award-winning magazine, our guests can choose from ample entertainment options throughout their journey. Traveling on our Airbus A321neo? Download our app prior to boarding to stream on your personal device.

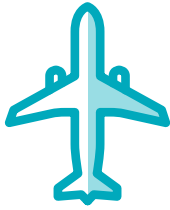


**COMFORT**  
SIT BACK & RELAX

Our guests can indulge themselves with a leisure travel experience thanks to our in-flight and airport products, including premium seating, extended legroom, priority boarding, personal electrical power outlets, club access and more.

## — FLEET —

*A state-of-the-art fleet for a safe and relaxing travel experience*



### 18 AIRBUS A321NEO

Seats 189 guests and serves mostly transpacific routes. The cabin pays homage to traditional Hawaiian craftsmanship and surrounds guests with island features including sand-inspired wall panels and mood lighting.



### 24 AIRBUS A330

Seats 278 guests and serves transpacific routes. Upon entering our fleet, each A330 was named after a celestial marker used by ancient Polynesian navigators from *Hōkūpaʻa* (Polaris) to *Hānaiakamalama* (Southern Cross).



### 19 BOEING 717

Seats 128 guests and serves the Neighbor Islands. Our Boeing 717s were designed specifically for short-range, high-frequency trips throughout the Hawaiian Islands, allowing for timely connections to our mainland and international networks.

## — DESTINATIONS —

*Connecting the Hawaiian Islands and sharing aloha with the world*



### 5 NEIGHBOR ISLAND

Our guests enjoy unmatched convenience with approximately 150 daily flights between the Hawaiian Islands.

#### Island of Hawaiʻi

Kona (KOA)  
Hilo (ITO)

#### Kauaʻi

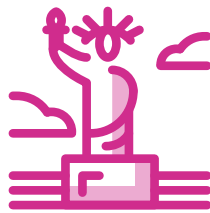
Līhuʻe (LIH)

#### Maui

Kahului (OGG)

#### Oʻahu

Honolulu (HNL)



### 16\* NORTH AMERICA

We connect Hawaiʻi with 16\* U.S. mainland cities, more than any other airline.

#### Arizona

Phoenix (PHX)

#### California

Los Angeles (LAX)  
Long Beach (LGB)  
Oakland (OAK)  
Ontario (ONT)  
Sacramento (SMF)  
San Diego (SAN)  
San Francisco (SFO)  
San Jose (SJC)

#### Massachusetts

Boston (BOS)

#### Nevada

Las Vegas (LAS)

#### New York

New York City (JFK)

#### Oregon

Portland (PDX)

#### Texas

Austin (AUS)

#### Utah\*

Salt Lake City (SLC)

#### Washington

Seattle (SEA)



### 10 INTERNATIONAL

We offer non-stop service between Hawaiʻi and 10 destinations throughout Asia and the Pacific.

#### American Samoa

Pago Pago (PPG)

#### Australia

Sydney (SYD)

#### Cook Islands

Rarotonga (RAR)

#### Japan

Haneda, Tokyo (HND)  
Narita, Tokyo (NRT)  
Osaka (KIX)  
Fukuoka (FUK)

#### New Zealand

Auckland (AKL)

#### South Korea

Seoul (ICN)

#### Tahiti

Papeete (PPT)

\*Beginning May 2024