



INSPIRING ESCAPES

AQUA—ASTON
HOSPITALITY





VACATIONS FOR EVERY TRAVELER

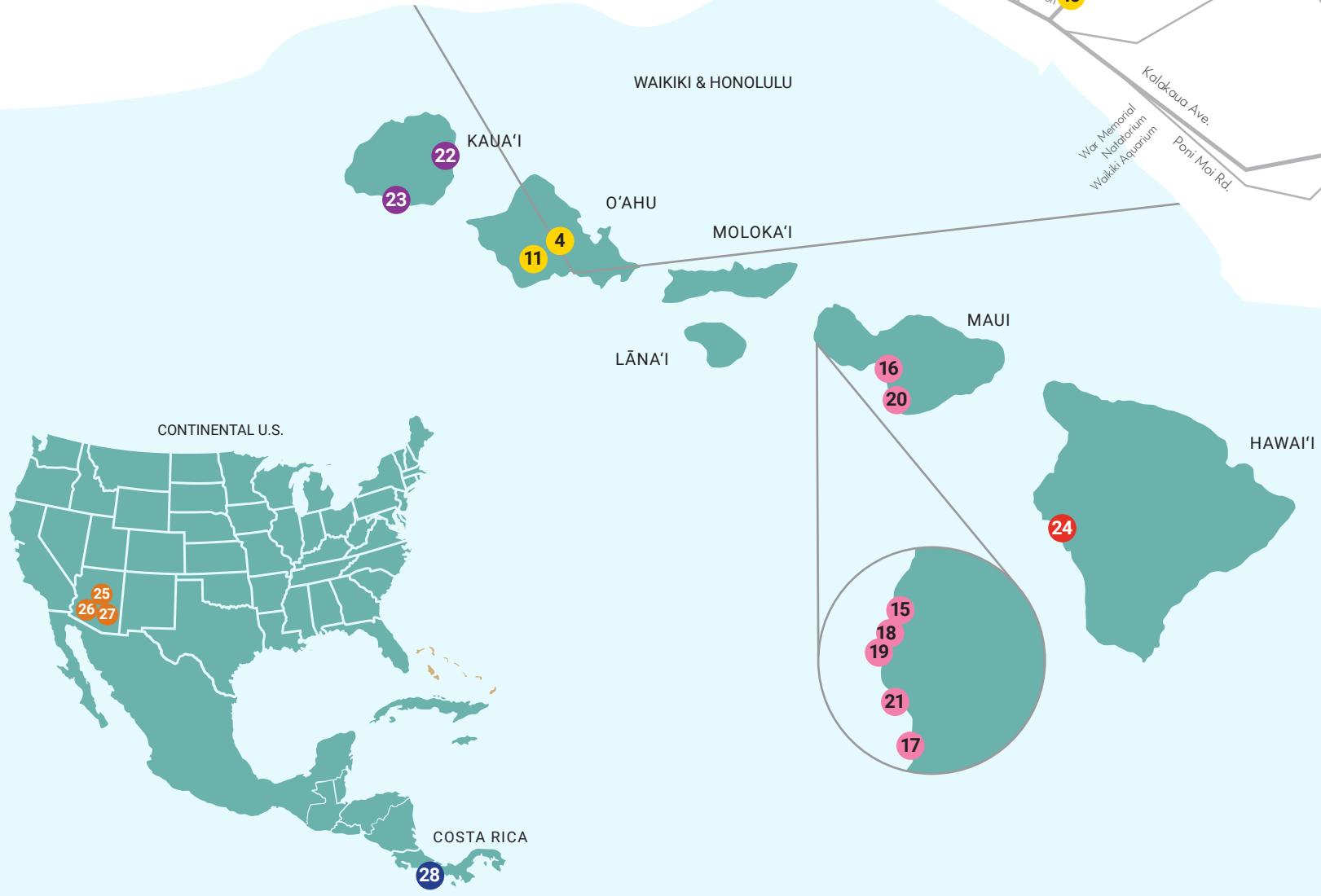
AQUA-ASTON COLLECTION

You are no ordinary traveler. You are a trendsetter, a dreamer, and an adventurer. You seek extraordinary experiences.

Offering an eclectic collection of properties across Hawai'i, the U.S. mainland – and Costa Rica – Honolulu-based Aqua-Aston Hospitality® is a destination expert. From full-service ultra luxury resorts and stylish boutique hotels to condominium retreats and affordable lodging, you can count on finding the perfect fit for any vacation lifestyle.

Let Aqua-Aston Hospitality help you plan your next adventure.

CALL 1.833.392.1538 OR VISIT AQUAASTON.COM.



ISLAND OF O'AHU

1	Aqua Aloha Surf Waikiki	★★★
2	Aqua Palms Waikiki	★★★
3	Aqua Skyline at Island Colony	★★★★
4	Aston at the Executive Centre	★★★
5	Aston at the Waikiki Banyan	★★★
6	Aston Waikiki Beach Tower	★★★★★
7	Aston Waikiki Circle Hotel	★★★
8	Aston Waikiki Sunset	★★★★
9	ESPACIO The Jewel of Waikiki	★★★★★
10	Ewa Hotel Waikiki	★★
11	Hampton Inn & Suites/Kapolei by Hilton™	★★★
12	Ilikai Hotel & Luxury Suites	★★★★
13	Ilikai Lite	★★★
14	Luana Waikiki Hotel & Suites	★★★★

ISLAND OF MAUI

15	Aston at Papakea Resort	★★★
16	Aston at the Maui Banyan	★★★
17	Aston at The Whaler on Kā'anapali Beach	★★★★
18	Aston Kā'anapali Shores	★★★★
19	Aston Mahana at Kā'anapali	★★★★
20	Aston Maui Hill	★★★
21	Maui Kā'anapali Villas	★★★★

ISLAND OF KAUAI

22	Aston Islander on the Beach	★★★
23	Aston at Po'ipū Kai	★★★

ISLAND OF HAWAII

24	Aston Kona by the Sea	★★★
----	-----------------------	-----

SCOTTSDALE

25	ADERO Scottsdale Resort, Autograph Collection® by Marriott	★★★★
----	---	------

TEMPE

27	Fairfield® by Marriott Inn & Suites Tempe	★★★
26	TownePlace Suites® by Marriott Tempe	★★★

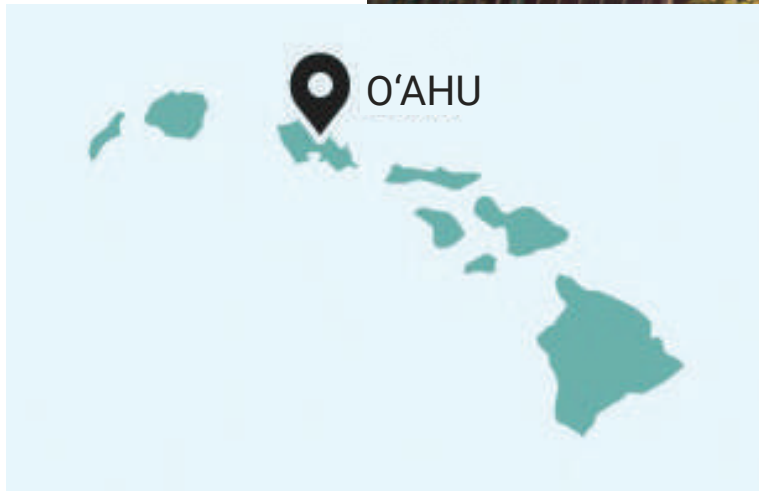
PUERTO JIMÉNEZ

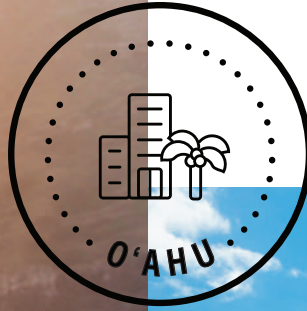
28	Botánica Osa Peninsula, Curio Collection by Hilton™	★★★★
----	--	------



HAWAII







**THE GATHERING PLACE OFFERS
ICONIC BEACHES AND CITY ESCAPES**

AQUA ALOHA SURF WAIKIKI ★★½

A charming hotel brimming with island personality, Aqua Aloha Surf Waikiki offers a range of accommodations, from cozy guest rooms to spacious 1-bedroom suites. The large open-air lobby connects to a relaxing pool with a barbecue grill and other poolside amenities. Located a few short blocks from the beach, a block from the International Market Place, and close to Ala Wai Golf Course, Aqua Aloha Surf Waikiki is one of Waikiki's most popular boutique hotels.



Room Categories	Bed Type	Sq.ft.
-----------------	----------	--------

Moderate	2T or Q	220
Superior w/Balcony	Q or K	340
Deluxe w/Balcony	D, T, SB	360

Deluxe Jr. Suite w/Balcony	or K, or Q, SB	385
1-BR Suite w/Balcony	K, SB	625

(K) King, (Q) Queen, (D) Double, (T) Twin, (SB) Sofa Bed

444 Kanekapolei Street | Honolulu 96815

Ph 808.923.0222 | Fax 808.924.7160

aquaaston.com/hotels/aqua-aloha-surf-waikiki

Sabre QU 51570 | Worldspan QU HNL20

Apollo/Galileo QU 26121 | Amadeus QU HNL820



Room Categories	Bed Type	Sq.ft.
City View	K or Q, K or Q, SB or 2Q	244-363
Diamond Head View	K or Q, K or Q, SF or 2Q	244-363
Partial Ocean View	K or Q, K or Q, SF or 2Q	244-363
Deluxe Jr. Suite	K, SB	485
Luxury 1-BR Suite w/Full Kitchen	K, SB	538

(K) King, (Q) Queen, (D) Double, (T) Twin, (SB) Sofa Bed

1850 Ala Moana Boulevard | Honolulu 96815

Ph 808.947.7256 | Fax 808.947.7002

aquaaston.com/hotels/aqua-palms-waikiki

Sabre QU 1511 | Worldspan QU HNLAQ

Apollo/Galileo QU 14591 | Amadeus QU HNLAQP

AQUA PALMS WAIKIKI ★★★

A tropical contemporary-inspired boutique hotel, Aqua Palms Waikiki has everything needed to kick-start a vacation. Upon entering the bright reinvented lobby, guests are treated to the true aloha experience along with complimentary refreshments. Renovated in 2020, guest rooms, deluxe studio suites, and 1-bedroom suites offer 40-inch HD televisions, mini refrigerators, and blackout drapes great for sleeping in. Convenient amenities include a pool, sundeck, and fitness center access. Guests will enjoy this lively boutique hotel that is conveniently located just a block from the beach at the gateway to Waikiki, and within walking distance to Ala Moana Shopping Center, Duke Kahanamoku Lagoon, Hawaii Convention Center, and Fort DeRussy.



Room Categories	Bed Type	Sq.ft.
1-BR Partial Ocean View	K, SB	879
1-BR Ocean View	K, SB	879
2-BR Partial Ocean View	K, 2T, SB	1,196
2-BR Ocean View	K, 2T, SB	1,196
2-BR Oceanfront	K, 2T, SB	1,196
2-BR Premium Oceanfront	K, 2T, SB	1,196
2-BR Penthouse	K, 2T, SB	1,196
2-BR Presidential Suite	K, 2T, SB	1,196

(K) King, (Q) Queen, (D) Double, (T) Twin, (SB) Sofa Bed

2470 Kalakaua Avenue | Honolulu 96815

Ph 808.926.6400 | Fax 808.926.7380

aquaaston.com/hotels/aston-waikiki-beach-tower

Sabre AH 23442 | Worldspan AH HNL50

Apollo/Galileo AH 9027 | Amadeus AH HNL500

ASTON WAIKIKI BEACH TOWER ★★★★★

Experience one of Waikiki's most luxurious condominium resorts, Aston Waikiki Beach Tower. This AAA Four Diamond-rated resort offers spacious and elegantly furnished 1- and 2-bedroom suites, each with a fully equipped kitchen, in-room washer/dryer units, and unparalleled ocean views. Thoughtful and elevated amenities ease the stress of travel and include a hospitality room for early check-ins and late-departure flights, and a sundeck that overlooks Waikiki Beach, equipped with grills and comfy cabanas. Nearby, you'll find an eclectic mix of shopping and dining, as well as a wide variety of on-site activities, including yoga, hula and 'ukulele lessons.

ASTON AT THE WAIKIKI BANYAN ★★★

Condominium-style Aston at the Waikiki Banyan enjoys a long history as a favorite among locals and return visitors alike. With employees who have been at the property since its opening, Aston at the Waikiki Banyan's ideal location near the excitement of Kalakaua Avenue makes it a destination for guests who like being in the midst of it all while still enjoying the peaceful side of Waikiki. Offering accommodations for up to five people at no additional charge, each 1-bedroom condominium suite has a separate lounge, a fully equipped kitchen, and a large private balcony overlooking the ocean, lush green mountains, or the Honolulu cityscape.



Room Categories	Bed Type	Sq.ft.
1-BR Standard	2T, SB or Q, SB	535
1-BR Superior	2T, SB or Q, SB	535
1-BR Deluxe Mountain View	2T, SB or Q, SB	535
1-BR Partial Ocean View	2T, SB or Q, SB	535
1-BR Deluxe Ocean View	2T, SB or Q, SB	535

(K) King, (Q) Queen, (D) Double, (T) Twin, (SB) Sofa Bed

201 Ohua Avenue | Honolulu 96815

Ph 808.922.0555 | Fax 808.922.0906

aquaaston.com/hotels/aston-at-the-waikiki-banyan

Sabre AH 23462 | Worldspan AH HNL90

Apollo/Galileo AH 9004 | Amadeus AH HNL900

ASTON WAIKIKI CIRCLE HOTEL ★★★

Aston Waikiki Circle Hotel's whimsical, circular architecture; playful ambiance; ideal location; and affordability make it a sought-after gem in Waikiki. Guest rooms featuring two double beds and brightly designed interiors with modern tropical accents are sure to make guests smile. Centrally located right across the street from Waikiki Beach, the property is just steps away from every water activity guests could want – from surfing to snorkeling to parasailing to sunset cruises.



Room Categories	Bed Type	Sq.ft.
Standard	2D	245
Partial Ocean View	2D	245
Ocean View	2D	245
Oceanfront	2D	245
Oceanfront Deluxe	2D	245

(K) King, (Q) Queen, (D) Double, (T) Twin, (SB) Sofa Bed

2464 Kalakaua Avenue | Honolulu 96815

Ph 808.923.1571 | Fax 808.926.8024

aquaaston.com/hotels/aston-waikiki-circle-hotel

Sabre AH 37159 | Worldspan AH HNLCR

Apollo/Galileo AH 40780 | Amadeus AH HNL850



STUDIO WITH KITCHENETTE

Room Categories	Bed Type	Sq.ft.
Moderate	Q or 2T	200-260
Studio w/Kitchenette	2T, DB or 2T or K	325-338
Studio w/Kitchenette & Balcony	K, DB or 2T	325-338
1-BR Suite w/Kitchenette	Q, 2T or 4T	500
2-BR Suite w/Kitchenette	2Q, 2T or Q, 4T or 4T, 2SB	700
3-BR Penthouse	K, 2T, 2SB or 4T, 2SB	1,360

(K) King, (Q) Queen, (D) Double, (T) Twin, (SB) Sofa Bed

2555 Cartwright Road | Honolulu 96815

Ph 808.922.1677 | Fax 808.923.8538

aquaaston.com/hotels/ewa-hotel-waikiki

Sabre QU 84601 | Worldspan QU 15176

Apollo/Galileo QU 76538 | Amadeus QU HNL176

EWA HOTEL WAIKIKI ★★

Guests seeking comfortable and charming island getaways at an affordable price need look no further than Ewa Hotel Waikiki. Pet-friendly accommodations with a tropical flair range from studios, 1-, 2- and 3-bedroom units with kitchenettes and private balconies. Guests can soak up the Hawaiian sunshine; take in a spectacular Waikiki sunset from the expansive rooftop sundeck; or head out to nearby activities and entertainment like world-famous Waikiki Beach, Diamond Head State Monument, Kapi'olani Park, or Honolulu Zoo.



Room Categories	Bed Type	Sq.ft.
Bus. Suite Deluxe Mountain View	2D or Q, K	500
Bus. Suite Deluxe Ocean View	2D or Q	500
1-BR Executive Mountain View	Q or K	750
1-BR Executive Ocean View	Q or K	750

(K) King, (Q) Queen, (D) Double, (T) Twin, (SB) Sofa Bed

1088 Bishop Street | Honolulu 96813

Ph 808.539.3000 | Fax 808.523.1088

aquaaston.com/hotels/aston-at-the-executive-centre

Sabre AH 32845 | Worldspan AH 4837

Apollo/Galileo AH 93122 | Amadeus AH HNL404

ASTON AT THE EXECUTIVE CENTRE HOTEL ★★★

As downtown Honolulu's only all-suite condominium resort, Aston at the Executive Centre Hotel is ideal for business travelers who seek comfort and convenience combined with business amenities and exceptional service. Located within walking distance of the Hawaii Capital Historic District, government offices, the city's financial district, and Hawai'i Pacific University, the hotel's 1-bedroom executive suites have fully equipped kitchens, while business suites offer wet bars and mini refrigerators. All suites have separate sleeping areas and floor-to-ceiling windows offering expansive views of the water, mountains, or city landmarks, including the nearby Aloha Tower.

HAMPTON INN & SUITES O'AHU/KAPOLEI BY HILTON™ ★★★

Hampton Inn & Suites O'ahu/Kapolei is the first of its kind in Hawai'i, offering all of the affordable luxuries of the Hilton Honors™ program benefits, conveniently located near some of O'ahu's best tourist spots. Popular nearby attractions include Pearl Harbor and Ko Olina Lagoons and Beach Park. Walk next door for local shopping at Ka Makana Ali'i or enjoy on-site activities like lounging by the outdoor swimming pool and training at the fitness center. Travelers seeking an early start to explore the island can indulge in a complimentary sit-down hot breakfast served daily, or opt for the On the Run™ option serviced in breakfast bags to-go. Budget-friendly accommodations — including both guestrooms and studio suites — are perfect for families, offering access to high chairs, cribs, and additional roll-out beds. Free parking is available.



KING STUDIO WITH REFRIGERATOR

Room Categories	Bed Type	Sq.ft.
Double Queen	2Q	325
King	K	338
King Sofa	K, SB	450
King Studio	K, SB	415

(K) King, (Q) Queen, (D) Double, (T) Twin, (SB) Sofa Bed

91-5431 Kapolei Parkway, Suite 900 | Kapolei 96707

Ph 808.628.4900 | Fax 808.628.4944

hilton.com/en/hotels/jrfhxhx-hampton-suites-oahu-kapolei

Sabre HX 309149 | Worldspan HX 01402

Amadeus HX HNL705 | Apollo/Galileo HX C6147

ILIKAI HOTEL & LUXURY SUITES ★★★★★

Internationally recognized in the famous opening sequence of the original *Hawai'i Five-O* series, the Ilikai Hotel & Luxury Suites is an iconic mid-century architectural masterpiece, shaped like a peace symbol when seen from the air. Representing Waikiki's golden era of hospitality, chic accommodations provide all the comforts of home, including full-size kitchens and premium bedding. This three-winged high-rise offers beautifully renovated luxury junior, 1-, and 2-bedroom suites on the second floor and the top four floors with in-room amenities, including stainless steel appliances, granite countertops, spacious bathrooms, and high-tech living spaces with 40-inch HD televisions and high-speed internet. On-site shopping and dining are also available. The Ilikai's spectacular ocean views and exceptionally warm service continue to delight generations of guests.



LUXURY 2-BEDROOM OCEANFRONT WITH KITCHEN

Room Categories	Bed Type	Sq.ft.
Luxury Jr. Suite City View	K, SB	450-500
Luxury Jr. Suite Courtyard View	K, SB	550
Luxury Jr. Suite Poolside View	K, SB	550
Luxury Jr. Suite Partial Ocean View	K, SB	550
Luxury Jr. Suite Ocean View	K, SB	550
Luxury Jr. Suite Sunset Ocean View	K, SB	500
Luxury 1-BR Ocean View	K, SB	500
Luxury 1-BR Boulevard View	K, SB	1,240
Luxury 2-BR City View	2K, SB	1,240
Luxury 2-BR Ocean View	2K, SB	1,240
Luxury 2-BR Oceanfront View	2K, SB	1,240

(K) King, (Q) Queen, (D) Double, (T) Twin, (SB) Sofa Bed

Note: All units include a full kitchen.

1777 Ala Moana Boulevard | Honolulu 96815

Ph 808.949.3811 | Fax 808.947.0892

aquaaston.com/hotels/ilikai-hotel-luxury-suites

Sabre QU 27151 | Worldspan QU HNLRN

Amadeus QU HNLRNB

Apollo/Galileo QU 26232 | TravelWeb QU 13240



Room Categories	Bed Type	Sq.ft.
Mountain View w/Full Kitchen	K, SB (most)	500
Ocean View w/Full Kitchen	K, SB (most)	500
2-BR Suite Mountain View	2K, SB	1,178
2-BR Suite Ocean View	2K, 2Q, SB	1,178
2-BR Suite Oceanfront	2K	1,178

(K) King, (Q) Queen, (D) Double, (T) Twin, (SB) Sofa Bed

1777 Ala Moana Boulevard | Honolulu 96815

Ph 808.944.6333 | Fax 808.947.0892

aquaaston.com/hotels/ilikai-lite

GDS Code: QU

ILIKAI LITE ★★★

Ilikai Lite is a selection of suites sharing amenities with the landmark Ilikai Hotel & Luxury Suites at a budget-friendly price. Both studio suites and 2-bedroom suites offer full kitchens and spacious balconies looking out on mountain or ocean views. With affordable rooms accompanied by magnificent views of O'ahu's shoreline and mountains, the Ilikai Lite is located on the Ala Wai Yacht Marina at the edge of Waikiki and just a short stroll away from Ala Moana Beach and Shopping Center. On-site shopping and dining are also available. Thoughtful hotel programming — like a nightly torch ceremony, Hawaiian cultural lessons, and live music and hula — are sure to make every stay unforgettable.



Room Categories	Bed Type	Sq.ft.
City View	2Q or Q, SB	340
Partial Ocean View	2Q or Q, SB	340
Studio w/Kitchenette	2Q or Q, SB	340
Studio w/Kitchenette	Q, SB	340
Partial Ocean View		
1-BR City View Suite	K, SB or 2Q, SB	657-746
w/Full Kitchen		
1-BR Ocean View Suite	K, SB or 2Q, SB	657-746
w/Full Kitchen		
2-BR 2-BA City View Suite	K, Q, SB	1,126

(K) King, (Q) Queen, (D) Double, (T) Twin, (SB) Sofa Bed

2045 Kalakaua Avenue | Honolulu 96815

Ph 808.955.6000 | Fax 808.943.8555

aquaaston.com/hotels/luana-waikiki-hotel-and-suites

Sabre QU 49526 | Worldspan QU LWS

Apollo/Galileo QU 68067 | Amadeus QU HNLLWS

LUANA WAIKIKI HOTEL & SUITES ★★☆☆

Ideal for active group travelers, Luana Waikiki Hotel & Suites is conveniently located near the popular Fort DeRussy Beach Park and Hawai'i Convention Center and offers spacious island-themed accommodations. Guests can relax in the secluded swimming pool or on the sundeck overlooking the city and work out in the glass-enclosed fitness center. Choose a cozy studio with a kitchenette or spread out in a 1- or 2-bedroom suite with a full kitchen.

ESPACIO THE JEWEL OF WAIKIKI ★★★★★

Recently awarded the coveted AAA Five Diamond rating, ESPACIO's nine luxurious suites are a haven for discerning travelers located at the most exclusive oceanfront address in Waikiki. From discreet residences designed to offer privacy in the heart of it all to VIP access to some of Hawai'i's most sought-after activities and cuisine, just one taste of the artfully curated ESPACIO experience promises to transform the standard of travel forever. On-site amenities include butler service, a private chef experience in-suite, and an expansive oceanfront balcony with Jacuzzi®. At our French-Japanese restaurant Mugen, guests enjoy access to a rare collection of fine wine, whiskey, and sake. Both ESPACIO and Mugen have been awarded five stars by the Forbes Travel Guide, making them the only hotel/restaurant combination in Hawai'i to receive the coveted honor.



Room Categories	Bed Type	Sq.ft.
Coral Beach View 3-BR	3K, TB	2,250
Garnet Beach View 3-BR	3K, TB	2,250
Ruby Beach View 2-BR + Den	2K, 1SB	2,250
Jade Ocean View 3-BR	3K, TB	2,250
Peridot Ocean View 3-BR	3K, TB	2,250
Emerald Ocean View 2-BR + Den	2K, 1SB	2,250
Azul Oceanfront 3-BR	3K, TB	2,250
Sapphire Oceanfront 2-BR + Den	2K, 1SB	2,250
Diamond Penthouse 3-BR	3K, TB	2,250

(K) King, (Q) Queen, (D) Double, (T) Twin, (SB) Sofa Bed, (TB) Trundle Bed

2452 Kalakaua Avenue | Honolulu 96815

Ph 855.945.4092 | Fax 808.941.3770

aquaaston.com/hotels/espacio-the-jewel-of-waikiki

Sabre AH 23446 | Worldspan AH HNL70

Apollo/Galileo AH 9009 | Amadeus AH HNL600



Room Categories	Bed Type	Sq.ft.
Studio w/Kitchenette	2Q or K, SB	308
Studio Panoramic City	2Q or K, SB	308
Studio Panoramic Ocean	2Q or K, SB	308
1-BR Suite	K, SB	570
1-BR Suite Panoramic City	K, SB	570
1-BR Suite Panoramic Ocean	K, SB	570

(K) King, (Q) Queen, (D) Double, (T) Twin, (SB) Sofa Bed

445 Seaside Avenue | Honolulu 96815

Ph 808.923.2345 | Fax 808.921.7105

aquaaston.com/hotels/aqua-skyline-at-island-colony

Sabre QU 23453 | Worldspan QU 7096

Apollo/Galileo QU 26026 | Amadeus QU HNL010

AQUA SKYLINE AT ISLAND COLONY ★★☆☆

High above the hustle and bustle of the city stands Aqua Skyline at Island Colony, Waikiki's tallest building. At 44 stories, the property features modern 3-star accommodations paired with commanding views of the Pacific Ocean and majestic Ko'olau Mountains. Ideally located just two blocks from the beach, and near Waikiki's best shopping and dining, the property infuses the Honolulu cityscape with contemporary urban design. The comfortable studios (with kitchenettes) and 1-bedrooms (with full kitchens) come with delightful in-room amenities like modern decor, deluxe bedding, granite countertops, and expansive walk-out balconies in every room.

ASTON WAIKIKI SUNSET ★★☆☆

Guests will find their Hawai'i home-away-from-home at Aston Waikiki Sunset. Centrally located in a quiet residential neighborhood but only a six-minute walk from world famous Waikiki Beach, the condominium resort is ideal for large groups and families. Tastefully decorated 1- or 2-bedroom suites with full kitchens, 32-inch flat-screen TVs and on-site amenities like a heated swimming pool, tennis courts, and outdoor grills. After enjoying a home-cooked meal, guests can relax on their private balcony and gaze out over the ocean, the mountains, or the vibrant city lights of Honolulu after dark.



Room Categories	Bed Type	Sq.ft.
1-BR Standard	2T, SB or Q, SB K, SB or D, T, SB	515
1-BR Superior	2T, SB or Q, SB K, SB or D, T, SB	515
1-BR Deluxe Mountain View	2T, SB or Q, SB K, SB or D, T, SB	515
1-BR Partial Ocean View	2T, SB or Q, SB K, SB or D, T, SB	515
1-BR Deluxe Ocean View	2T, SB or Q, SB K, SB or D, T, SB	515
2-BR Diamond Head	Q, 2T, SB or Q, K, SB	590
2-BR Partial Ocean View	Q, 2T, SB or Q, K, SB	590
2-BR Ocean View	Q, 2T, SB or Q, K, SB	590
2-BR PH Mountain View	K, 2T, SB or K, 2D, SB	1,200
2-BR PH Ocean View	K, 2T, SB or K, 2D, SB	1,200

(K) King, (Q) Queen, (D) Double, (T) Twin, (SB) Sofa Bed

229 Paoakalani Avenue | Honolulu 96815

Ph 808.922.0511 | Fax 808.923.8580

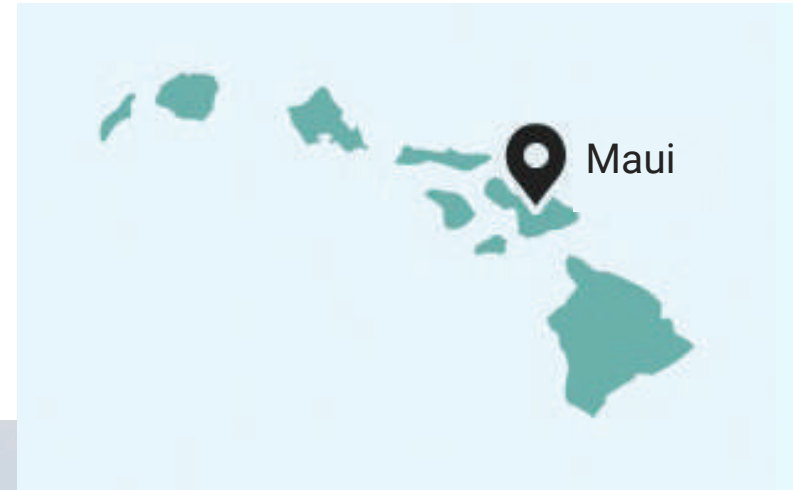
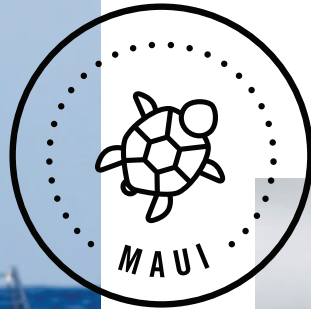
aquaaston.com/hotels/aston-waikiki-sunset

Sabre AH 23448 | Worldspan AH HNL60

Apollo/Galileo AH 9000 | Amadeus AH HNL700

DISCOVER BREATHTAKING BEACHES ON THE VALLEY ISLE





ASTON KĀ'ANAPALI SHORES ★★☆☆

Enjoy the quintessential Hawai'i experience, all within the oceanfront Aston Kā'anapali Shores. Located directly on West Maui's Kā'anapali Beach, the condominium community rests on 10 acres of tropical gardens, flowing waterfalls, and white sands. Guest rooms combine spacious home-away-from-home comforts with the convenience of hotel-caliber services. Thoughtful resort programming is sure to excite guests of all ages. Visitors can participate in on-site activities like scuba diving, lei-making, and hula dance classes. Later, everyone can come together for "Talk Story," an immersive learning experience where hotel team members and guests come together to explore Hawai'i's rich culture and history. For much-needed relaxation time, unwind in tropical gardens, sit by cascading waterfalls, swim in two brilliantly designed pools, or dine al fresco with stunning views of Moloka'i and Lāna'i. Guests will also enjoy the on-site Beach Club & Restaurant, Puamana Spa, and shopping.



Suite Categories	Bed Type	Sq.ft.
Hotel Room	Q	225
Junior Suite w/Kitchen	Q, SB	600
1-BR Standard	K	907
1-BR Garden View	K	907
1-BR Ocean View	K	907
2-BR Garden View	K, 2T, SB	1,231
2-BR Ocean View	K, 2T, SB	1,231
2-BR Oceanfront	K, 2T, SB	1,231
Aloha Suite Oceanfront	K, 2T, SB	2,005
Penthouse Suite	K, 2T, SB	2,005

(K) King, (Q) Queen, (D) Double, (T) Twin, (SB) Sofa Bed

3445 Lower Honoapiilani Road | Lāhainā 96761

Ph 808.667.2211 | Fax 808.661.0836

aquaaston.com/hotels/aston-kaanapali-shores

Sabre AH 23449 | Worldspan AH 0GG10

Apollo/Galileo AH 9001 | Amadeus AH JHM100



Room Categories	Bed Type	Sq.ft.
Studio Oceanfront	K or Q or MB	540
Studio Premium Oceanfront	K or Q or MB	540
1-BR Oceanfront	K	938
1-BR Premium Oceanfront	K	932
1-BR 2-BA Oceanfront	K	938
1-BR 2-BA Premium Oceanfront	K	938
2-BR 2-BA Oceanfront	K, 2T, SB	1,418
	K, Q, SB	
2-BR 2-BA Premium Oceanfront	K, 2T, SB	1,418
	K, Q, SB	

(K) King, (Q) Queen, (D) Double, (T) Twin, (SB) Sofa Bed, (MB) Murphy Bed

110 Kā'anapali Shores Place | Lāhainā 96761

Ph 808.661.8751 | Fax 808.661.5510

aquaaston.com/hotels/aston-mahana-at-kaanapali

Sabre AH 23455 | Worldspan AH OGG30

Apollo/Galileo AH 9010 | Amadeus AH JHM400

ASTON MAHANA AT KĀ'ANAPALI ★★★★★

Experience the beauty and tranquility that makes Maui unique at Aston Mahana at Kā'anapali. The property's all-oceanfront guest rooms are a home-away-from-home – each outfitted with a fully equipped kitchen, custom furnishings, and a washer/dryer. Suites feature floor-to-ceiling windows and a private balcony overlooking the ocean. Guests can take in the magic of a Maui sunset or keep an eye out for the turtles, dolphins, and stingrays that inhabit Maui's colorful reefs. Those staying between November and April may even be lucky enough to catch the sight of a humpback whale or two.



Room Categories	Bed Type	Sq.ft.
Hotel Room Standard	2D or K or Q	275
Hotel Room Deluxe	2D or K or Q	275
1-BR Standard	K or Q	650
1-BR Deluxe	K or Q	650
1-BR Partial Ocean View	K or Q	650
1-BR Deluxe Partial Ocean View	K or Q	650
2-BR Standard	K, 2D or Q, 2D	900
2-BR Deluxe	K, 2D or Q, 2D	900
2-BR Partial Ocean View	K, 2D or Q, 2D	900
2-BR Partial Ocean View Deluxe	K, 2D or Q, 2D	900

(K) King, (Q) Queen, (D) Double, (T) Twin, (SB) Sofa Bed

2575 South Kihei Road | Kihei 96753

Ph 808.875.0004 | Fax 808.874.4035

aquaaston.com/hotels/aston-at-the-maui-banyan

Sabre AH 24436 | Worldspan AH 0GGMB

Apollo/Galileo AH 60746 | Amadeus AH 0GG100

ASTON AT THE MAUI BANYAN ★★★

Situated in Kihei, directly across the street from the golden sands of Kama'ole Beach, lies Aston at the Maui Banyan. Offering spacious and affordable standard, 1-, and 2-bedroom suites and easy access to Maui's most popular attractions, the property makes for an unforgettable vacation. On-site amenities like outdoor barbecues, tennis courts, and swimming pools, all in proximity to golf courses and beaches, make it a go-to destination for families and larger groups who enjoy staying active outdoors.

ASTON MAUI HILL ★★★

In Hawai‘i, *‘ohana* means "family," and at Aston Maui Hill, every guest is *‘ohana*. A private oasis situated in a tropical setting overlooking the clear blue of the Pacific, this property offers a choice of luxurious 1-, 2-, and 3-bedroom suites. The spacious accommodations come with tropical garden or ocean views, fully equipped kitchens, washer/dryers, and large furnished balconies or patios – perfect for relaxing and enjoying the cool ocean breeze. Nearby, guests can enjoy world-class golf courses, numerous fine shops and restaurants, and thoughtfully designed on-site programming like “Talk Story,” an immersive experience where guests can learn more about Hawai‘i’s rich history and culture.



Room Categories	Bed Type	Sq.ft.
1-BR Garden View	Q, SB	1,035
1-BR Ocean View	Q, SB	1,035
2-BR Garden View	2Q, SB	1,397
2-BR Ocean View	2Q, SB	1,397
3-BR Ocean View	K, 2Q, SB	1,695

(K) King, (Q) Queen, (D) Double, (T) Twin, (SB) Sofa Bed

2881 South Kihei Road | Kihei 96753
Ph 808.879.6321 | Fax 808.879.8945
aquaaston.com/hotels/aston-maui-hill

Sabre AH 23457 | Worldspan AH 0GG50
Apollo/Galileo AH 9021 | Amadeus AH 0GG500

MAUI KĀ'ANAPALI VILLAS ★★★★★

Escape the hustle and bustle of everyday life at the breathtaking Maui Kā'anapali Villas, set on 11 acres of exotic tropical gardens in the Kā'anapali Resort area. Situated on one of the finest stretches of Kā'anapali Beach, the condominium resort offers a variety of accommodations, from studios to premium suites furnished with upgraded furniture, decor, fully equipped kitchens, and redesigned bathrooms. Guests can enjoy daily morning coffee service in the lobby; lounge poolside; grab a bite at the on-site Castaway Café, offering delicious island cuisine and an award-winning wine list; and sip a mai tai in the property's reception area every Wednesday evening. The resort also offers a complimentary shuttle for guest transportation to and from Kā'anapali Resort's two championship golf courses, Whalers Village, beachfront lū'aus, and more.



Room Categories	Bed Type	Sq.ft.
Hotel Room	K or Q	520
Premium Hotel Room	K or Q	520
Studio Garden View	K, SB or Q, SB or 2D, SB	660
Studio Premium Garden View	K, SB or Q, SB or 2D, SB	660
Studio Ocean View	K, SB or Q, SB	660
Studio Premium Ocean View	K, SB or Q, SB or 2D, SB	660
Studio Oceanside	K, SB or Q, SB	660
Studio Premium Oceanside	K, SB or Q, SB	660
1-BR Garden View	K, SB or Q, SB or 2D, SB	920*
1-BR Premium Garden View	K, SB or Q, SB or 2D, SB	920*
1-BR Ocean View	K, SB or Q, SB or 2D, SB	920*
1-BR Premium Ocean View	K, SB or Q, SB or 2D, SB	920*
1-BR Oceanside	K, SB or Q, SB or 2D, SB	920*
1-BR Premium Oceanside	K, SB or Q, SB or 2D, SB	920*
2- BR Suite	K, Q, SB	1,750

(K) King, (Q) Queen, (D) Double, (T) Twin, (SB) Sofa Bed

* Units vary from 920–1,260 square feet.

45 Kai Ala Drive | Lāhainā 96761

Ph 808.667.7791 | Fax 808.667.0366

aquaaston.com/hotels/maui-kaanapali-villas

Sabre AH 23456 | Worldspan AH 0GG40

Apollo/Galileo AH 9019 | Amadeus AH JHM200



Room Categories	Bed Type	Sq.ft.
Studio Garden View	Q or MB	454
Studio Ocean View	Q or MB	454
Studio Oceanfront	Q or MB	454
1-BR Garden View	K, SB or Q, SB	620
1-BR Ocean View	K, SB or Q, SB	620
1-BR Oceanfront	K, SB or Q, SB	620
2-BR Garden View	K, Q, SB or K, 2T, SB	861
	2Q, SB or Q, 2T, SB	
2-BR Ocean View	K, Q, SB or K, 2T, SB	861
	2Q, SB or Q, 2T, SB	
2-BR Oceanfront	K, Q, SB or K, 2T, SB	861
	2Q, SB or Q, 2T, SB	
3-BR Ocean View	K, Q, 2T, SB or 2Q, 2T, SB	1,217
3-BR Oceanfront	K, Q, 2T	1,217

(K) King, (Q) Queen, (D) Double, (T) Twin, (SB) Sofa Bed, (MB) Murphy Bed

3543 Lower Honoapiilani Road | Lāhainā 96761

Ph 808.665.0880 | Fax 808.667.3725

aquaaston.com/hotels/aston-at-papakea-resort

Sabre AH 23843 | Worldspan AH 0GGPK

Apollo/Galileo AH 87876 | Amadeus AH JHMPPK

ASTON AT PAPAKEA RESORT ★★★

A garden paradise on The Valley Isle, the picturesque oceanfront Aston at Papakea Resort is active living at its best. Spread across 13 beautifully manicured acres overlooking the Kā'anapali Coast, the property's two swimming pools and whirlpool spas, lighted tennis courts, and two 12-hole putting greens make it easy for guests to stay active.

Inside, guests can enjoy spectacular views of the ocean or garden from studio, 1-, 2-, or 3-bedroom suites. Visit the nearby Kā'anapali and Kapalua resort areas for a pristine selection of beaches, championship golf courses, shops, and restaurants.



Room Categories	Bed Type	Sq.ft.
Studio Garden View	K or WB	640
Studio Garden View Premium	K or WB	640
Studio Ocean View	K or WB	64
Studio Ocean View Premium	K or WB	640
1-BR 1-BA Garden View	K or SB*	1,118
1-BR 1-BA Ocean View	K or SB*	1,114
1-BR 1-BA Ocean View Premium	K or SB*	1,114
1-BR 2-BA Garden View	K or SB*	1,118
1-BR 2-BA Ocean View	K or SB*	1,118
1-BR 2-BA Ocean View Premium	K or SB*	1,118
1-BR 2-BA Oceanfront	K	1,118
2-BR Garden View	2K, SB	1,952
2-BR Ocean View	K, 2Q, SB	1,952
2-BR Ocean View Premium	K, 2Q, SB or 2K, SB	1,952
2-BR Oceanfront	K, 2Q, SB or 2K, SB	1,952
2-BR Oceanfront Premium	K, 2Q, SB or 2K, SB	1,952

(K) King, (Q) Queen, (D) Double, (T) Twin, (SB) Sofa Bed, (WB) Wall Bed
 * Only some units have a sofa bed.

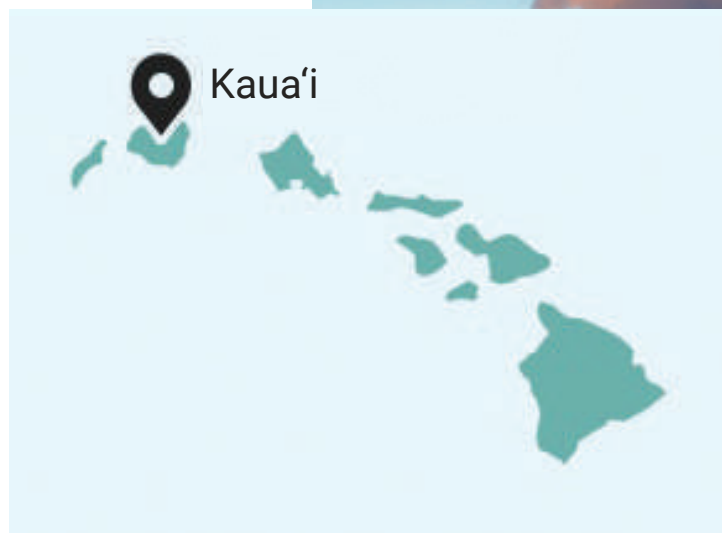
2481 Kā'anapali Parkway | Lāhainā 96761
 Ph 808.661.6000 | Fax 808.661.8315
aquaaston.com/hotels/aston-at-the-whaler-on-kaanapali

Sabre AH 53883 | Worldspan AH JHM94
 Apollo/Galileo AH 28462 | Amadeus AH JHM194

ASTON AT THE WHALER ON KĀ'ANAPALI BEACH ★★★★★

Comprised of two 12-story mid-century towers on six acres of lush landscape, Aston at The Whaler on Kā'anapali Beach offers beautiful Pacific Ocean views, island-style hospitality, and the convenience of luxury condominium living with hotel amenities. Guests can spread out and relax in generously sized suites and studios, ranging from 640 to nearly 2,000 square feet. Take a stroll through the manicured garden courtyard featuring a waterfall and koi pond. On-site amenities include conveniences like a heated swimming pool overlooking the ocean, whirlpool spa, sauna, fitness center, tennis court, barbecue grills, spa, and more. Beyond the property, guests can walk just a few steps to famed Kā'anapali Beach or play a leisurely round of golf at either the Royal Kā'anapali Course or the Kā'anapali Kai Course before heading to Whalers Village for an indulgent shopping day.







**INSPIRATION AWAITS
ON THE GARDEN ISLE**



Room Categories	Bed Type	Sq.ft.
Hotel Room Garden View	2D	372
Hotel Room Partial Ocean View	2D	372
Hotel Room Ocean View	Q, SB	372
Hotel Room Oceanfront	Q, SB	372
1-BR Ocean View	K, SB	529

(K) King, (Q) Queen, (D) Double, (T) Twin, (SB) Sofa Bed

440 Aleka Place | Kapa'a 96746

Ph 808.822.7417 | Fax 808.822.1947

aquaaston.com/hotels/aston-islander-on-the-beach

Sabre AH 13428 | Worldspan AH LIHKB

Apollo/Galileo AH 11381 | Amadeus AH LIH079

ASTON ISLANDER ON THE BEACH ★★★

With its plantation-style architecture and direct proximity to the beach, Aston Islander on the Beach offers a white-sand escape on Kaua'i's Royal Coconut Coast. A peaceful retreat set on six acres of tropical floral gardens, the resort boasts an oceanfront pool and poolside bar, outdoor grills, bike rentals, and whirlpool spas. Guest rooms and 1-bedroom suites are designed with contemporary island decor. The location provides easy access to some of Kaua'i's most popular experiences, including a stroll through the neighboring Coconut Marketplace; live music, shopping, and local flavors at the lively Kapa'a Town; hiking at Waipouli Beach Park; and cycling alongside scenic views on the Ke Ala Hele Makalae bike path.

ASTON AT PO'IPŪ KAI ★★★

Situated on Kauaʻi’s sunny southern coast, Aston at Poʻipū Kai stretches across several condominium communities and residential areas, offering lush tropical gardens, spacious accommodations with ocean views, and five swimming pools. A variety of room types include 1- to 3-bedroom suites and 3- and 4-bedroom single-family homes, each with a fully equipped kitchen and washer/dryer. This prime location places guests close to local shops and restaurants, as well as popular attractions, including Poʻipū Beach; Waimea Canyon State Park, the “Grand Canyon of the Pacific;” and Spouting Horn.



2-BEDROOM 2-BATHROOM OCEAN VIEW

Suite Categories	Bed Type	Sq.ft.
1-BR 1-BA Garden View	K, SB	1,017
1-BR 1-BA Ocean View	K	1,017
2-BR 2-BA Garden View	K, 2T, SB	1,114
2-BR 2.5-BA Garden View w/Loft	K, Q, 2T, SB	1,114
2-BR 2-BA Ocean View	K, 2T, SB	1,114
2-BR 2-BA Private Home	K, 2T, SB	1,550
3-BR 2-BA Private Home	K, Q, 2T	1,730
4-BR 4-BA Private Home	K, Q, 2T, D	1,994

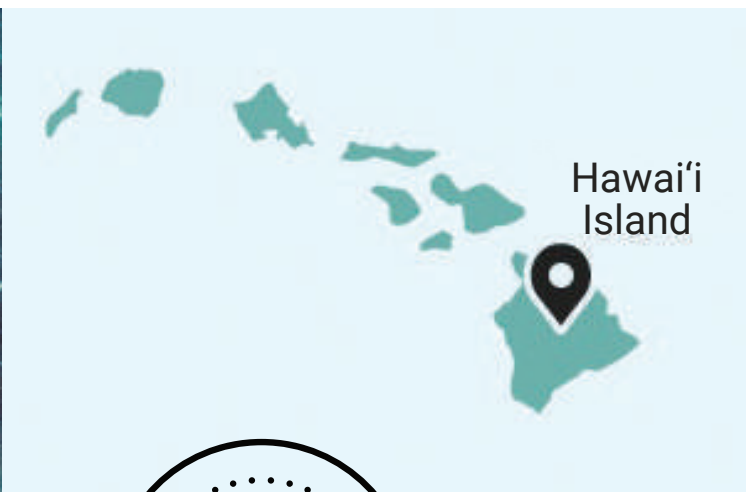
(K) King, (Q) Queen, (D) Double, (T) Twin, (SB) Sofa Bed

1465 Pe'e Road | Koloa, HI 96756
Ph 808.742.7424 | Fax 808.742.8798
aquaaston.com/hotels/aston-at-po'ipu-kai

Sabre AH 41646 | Worldspan AH LIHPK
Apollo/Galileo AH 87879 | Amadeus AH LIHPPK

BIG ADVENTURES ON THE BIG ISLAND







Suite Categories	Bed Type	Sq.ft.
1-BR Partial Ocean View	K or K, SB	919
1-BR Ocean View	K or K, SB	919
1-BR Oceanfront	K or K, SB	919
2-BR Ocean View	K, 2T, SB or K, 2T or 2K or K, Q or Q, D or K, MB, SB	1,263
2-BR Oceanfront	K, 2T, SB or K, 2T or 2K or K, Q or Q, D or K, MB, SB	1,263

(K) King, (Q) Queen, (D) Double, (T) Twin, (SB) Sofa Bed, (MB) Murphy Bed

75-6106 Ali'i Drive | Kailua-Kona 96740

Ph 808.327.2300 | Fax 808.327.2333

aquaaston.com/hotels/aston-kona-by-the-sea

Sabre AH 23452 | Worldspan AH KOA80

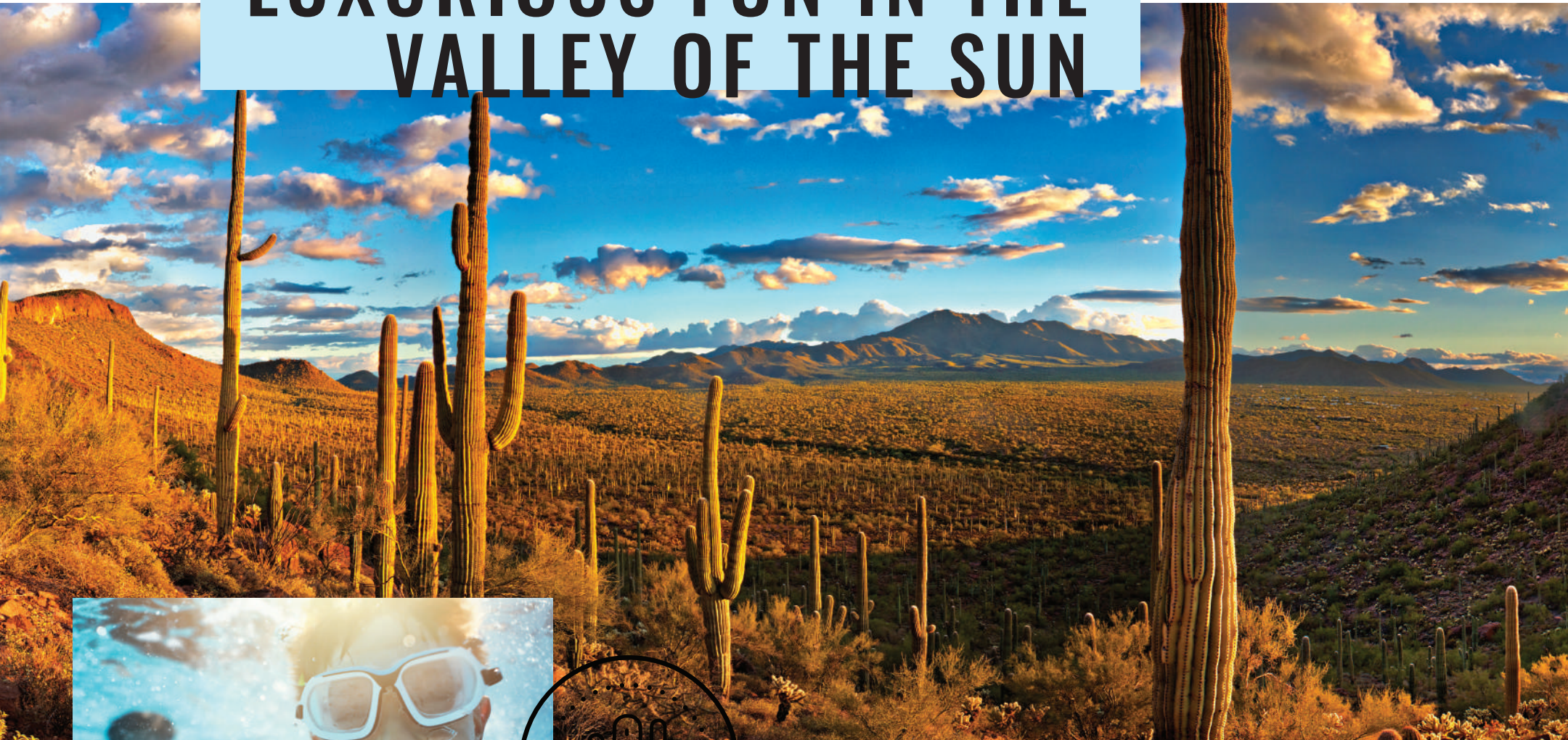
Apollo/Galileo AH 9015 | Amadeus AH KOA100

ASTON KONA BY THE SEA ★★★

Set in a cove on the west side of the island of Hawai'i, Aston Kona by the Sea is an intimate oceanfront condo resort and an idyllic retreat. The property's spacious accommodations offer magnificent views of the coastline, where guests can sunbathe and unwind under the shade of coconut trees or head to the quaint town of Kailua-Kona, known for its charming shops, dining, and nightlife. The condominium-style suites feature fully equipped kitchens, spacious living areas, and furnished balconies, ideal for large groups and families. Travelers seeking adventure can embark on an exciting helicopter tour of the island, visit Hawai'i Volcanoes National Park, play a leisurely round of golf, tour a local Kona coffee farm, or experience a festive lū'au.



LUXURIOUS FUN IN THE VALLEY OF THE SUN





SCOTTSDALE

ADERO SCOTTSDALE RESORT, AUTOGRAPH COLLECTION BY MARRIOTT ★★ ★★

ADERO Scottsdale Resort, perched high above the Sonoran Desert, is the only Autograph Collection® destination in a certified Dark Sky Community. The AAA Four Diamond-rated resort was also named on the prestigious "It List" by *Travel + Leisure* and *Condé Nast Traveler's* "Hot List" for 2021. All 177 spacious rooms (including 16 oversized suites) feature a private balcony for guests to enjoy unrivaled starry skies and views in nearly every direction. An idyllic setting for intimate celebrations and gatherings, ADERO offers guests endless opportunities to indulge in the great outdoors. This elevated escape provides visitors with a world-class fitness club, desert-inspired adventure spa, farm-to-table cuisine, a poolside oasis, on-site trailheads for hikes and mountain biking, access to the neighboring SunRidge Canyon Golf Club, nightly stargazing, and more. Enjoy cocktails among the clouds and stars at the SkyTop Lounge before dining amongst breathtaking views from ADERO's signature restaurant, CIELO. ADERO invigorates the mind and stirs the spirit for getaways that are true adventures for the soul.



Room Categories	Bed Type	Sq.ft.
Standard Guest Room	K, 2Q	400
Mountain View Guest Room	K, 2Q	400
Cliffside Guest Room*	K, 2Q	450
Sky View Guest Room	K, 2Q	400
Desert Spa Suite	K	600
Dark Sky Corner Suite	K	730
Terrace Suite	K	730
Celestial Suite	K	730

(K) King, (Q) Queen, (D) Double, (T) Twin, (SB) Sofa Bed

13225 N Eagle Ridge Drive | Scottsdale, AZ 85268

Ph 480.333.1900

aderoscottsdale.com

Sabre AK 298713 | Worldspan AK PHXAF

Galileo AK B7703 | Amadeus AK PHXAFA



CHOOSE YOUR ADVENTURE





TEMPE



EXTERIOR VIEW

Room Categories	Bed Type	Sq.ft.
Standard Room w/ 1 King Bed	K	275
Standard Room* w/ 2 Queen Beds	2Q	325
1-BR Suite w/1 King Bed + Full Sofa Bed	K, FSB	380

(K) king, (Q) queen, (FSB) full sofa bed

*Accessible rooms are available

1929 East Rio Salado Parkway | Tempe, AZ 85288

Ph. 520.536.8100

marriott.com/phxfe

Sabre 604022 | Worldspan PHXFE

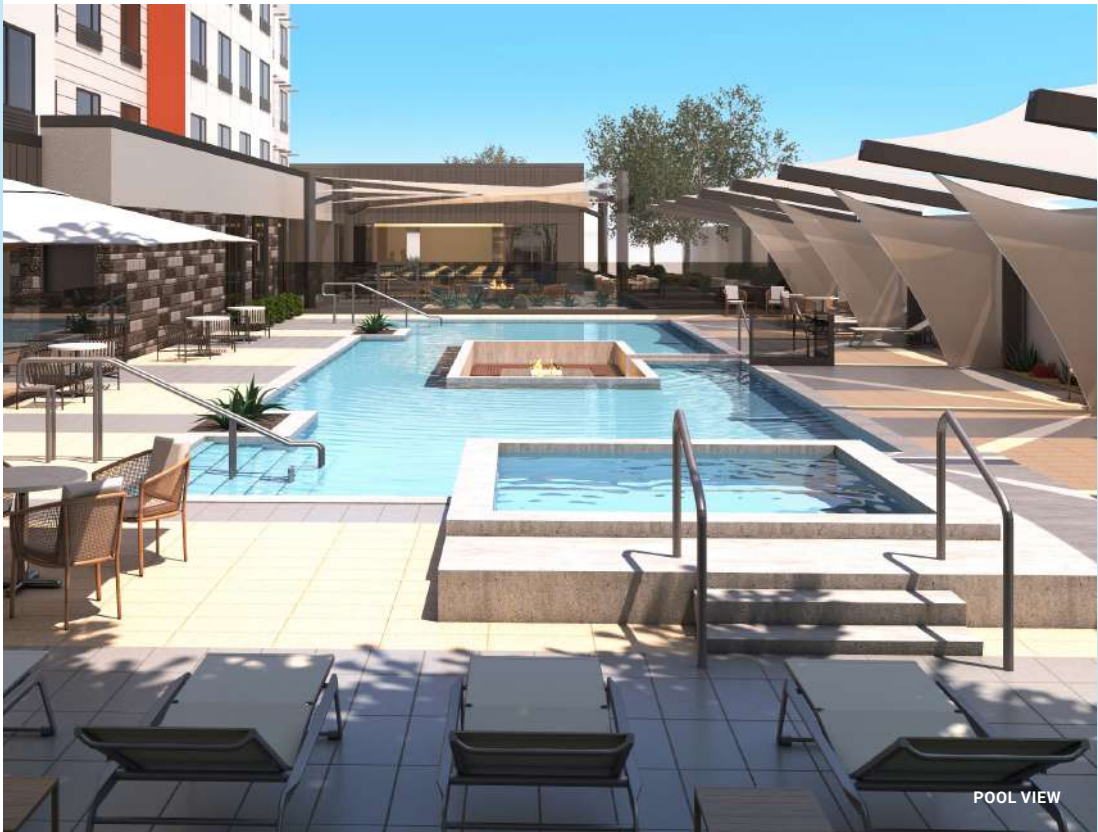
Apollo H9028 | Amadeus PHXFEF

FAIRFIELD® BY MARRIOTT INN & SUITES TEMPE ★★★

Conveniently located across from Tempe Marketplace and near Arizona State University, Fairfield by Marriott Inn & Suites Tempe offers a dynamic urban atmosphere with easy access to the Valley of the Sun. Shared with sister hotel TownePlace Suites by Marriott Tempe, common spaces seamlessly blend, providing a perfect travel experience. Guests enjoy spacious rooms, comfy beds, impeccable service, and various amenities, including a complimentary breakfast. The pool, The Way Station restaurant, and a 24/7 fitness center with top-notch equipment enhance the experience. Ideal for small business events, the flexible Fairfield space stands out. With its superb location near Phoenix Sky Harbor International Airport, Mountain American Stadium, and other key attractions, the hotel ensures a delightful travel stay.

TOWNEPLACE SUITES® BY MARRIOTT TEMPE ★★★

Located across Tempe Marketplace and just minutes away from Arizona State University, TownePlace Suites by Marriott Tempe, one of the newest hotels near Phoenix Sky Harbor International Airport, shares common spaces with sister hotel Fairfield by Marriott Inn & Suites Tempe. Enjoy extended-stays with spacious accommodations and full kitchens, an on-site laundry facility, complimentary breakfast, and The Way Station restaurant’s Old West charm with live music and DJ performances. Relax by the outdoor pool, gather around the fire pit, or use the 24/7 fitness center. Ideal for business or group events, flexible meeting space makes the hotel a convenient choice near Major League Baseball spring training site Sloan Park, Mayo Clinic’s Sports Medicine Center, and Mountain American Stadium.



Room Categories	Bed Type	Sq.ft.
Studio King	K	305
Studio Suite w/ 2 Queen Beds	2Q	430-594
1-BR Suite*	K, QSB	380
w/ 1 King Bed + Queen Sofa Bed		

(K) king, (Q) queen, (QSB) queen sofa bed

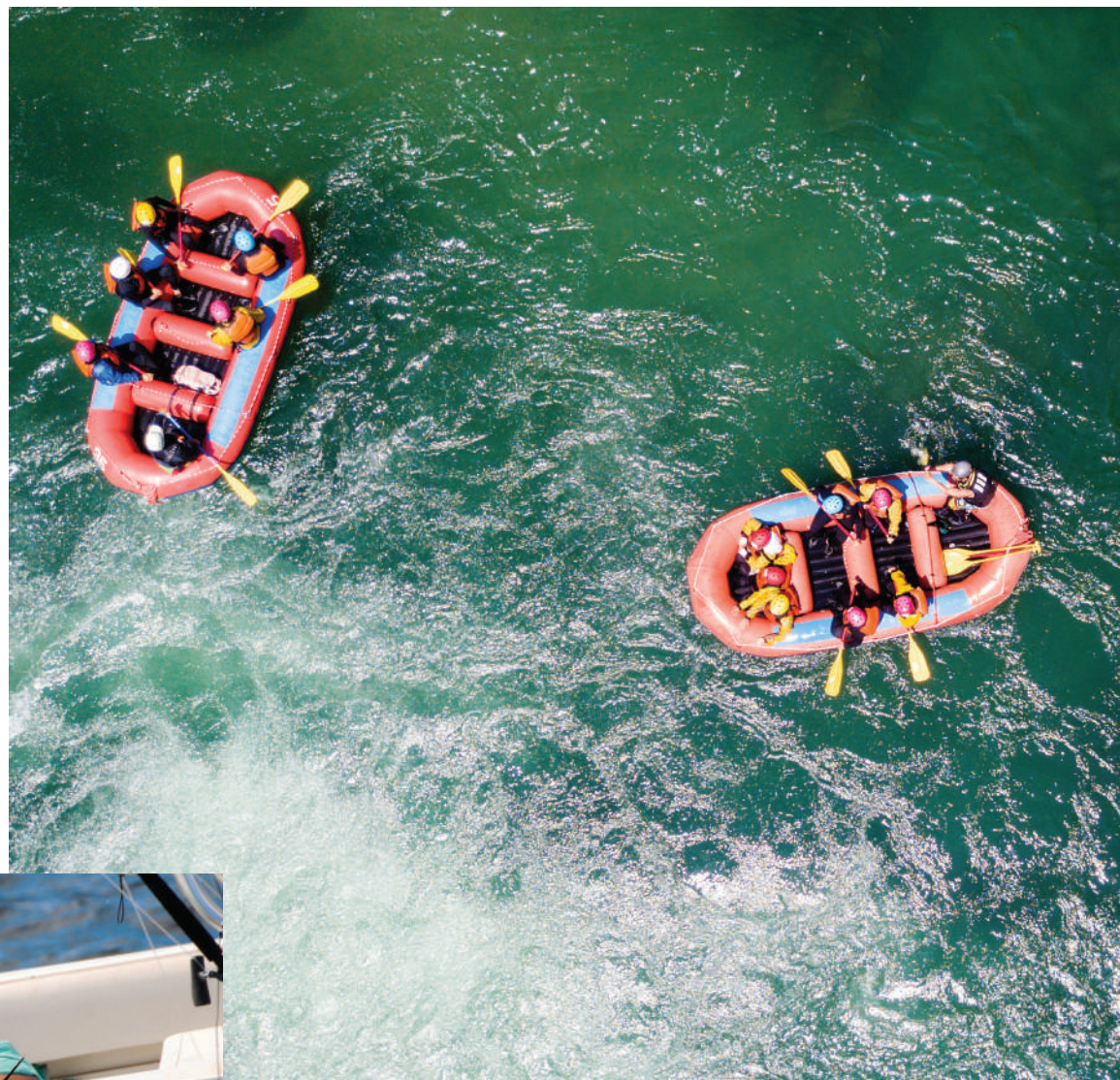
*Accessible rooms are available

1929 East Rio Salado Parkway | Tempe, AZ 85288
Ph. 520.536.8300
marriott.com/phxpe

Sabre 060441 | Worldspan PHXPE
Apollo H9241 | Amadeus PHXPET

COSTA RICA





**DISCOVER YOUR
PURA VIDA**

BOTÁNICA OSA PENINSULA, CURIO COLLECTION BY HILTON™ ★★☆☆

With the Corcovado National Park in your backyard and the Pacific Ocean in your front yard, Botánica Osa Peninsula offers an unparalleled combination of nature and luxury. Sprawled alongside the Golfo Dulce – home to sea turtles, whale sharks, dolphins, and migrating humpback whales – this resort offers Rainforest Residences. Studio, 1-, 2-, and 3-bedroom floor plans offer home-away-from-home amenities and immersive views of the dramatic landscaped gardens. Enjoy on-site resort amenities, including shopping, dining, spa services, and meeting spaces. Lounge by the natural lagoon pool, stroll through the orchid garden and rainforest canopy, or take a hike on one of the many trails. Nearby, Puerto Jiménez offers convenient shopping and dining in a welcoming village made up of artists, fishermen, and families.



Room Categories	Bed Type	Sq.ft.
1 King Bed Guest Room	K	446
1 King Bed Guest Room ADA	K	446
2 Queen Bed Guest Room	2Q	446
1 King Bed, 1-BR Suite	K, SB	944/956
2 King Bed,		
2-BR Garden Villa Suite	2K, SB	1,947
1 King Bed/1 Queen Bed,		
2-BR Suite	K, Q, SB	1,405
1 King Bed/2 Queen Bed,		
2-BR Suite	K, 2Q, SB	1,439
2 King Bed/2 Queen Bed,		
3-BR Suite	2K, 2Q, SB	1,851
2 King Bed/2 Queen Bed,		
3-BR Garden Villa Suite	2K, 2Q, SB	2,393
(K) King, (Q) Queen, (D) Double, (T) Twin, (SB) Sofa Bed		

Costado sureste del aeropuerto de Puerto Jiménez 60702 Costa Rica
+506.2735.5400
botanikaresort.com



TEAM HQ

AQUA-ASTON HOSPITALITY
820 Mililani Street, Suite 600
Honolulu, HI 96813
Phone: 808.931.1400
asksales@aquaaston.com

RESERVATIONS

TOLL-FREE (U.S. & Canada): 1.833.392.1538
International: +1.808.564.7618
reservations@aquaaston.com

CORPORATE MEDIA RELATIONS

PR@aquaaston.com

MEDIA LIBRARY

aquaastonlibrary.com

GROUP DESK

(10 rooms or more)
Fax: 808.931.1414
groups@aquaaston.com

GDS CODES

Aqua GDS CODE: QU
Aston GDS CODE: AH

facebook.com/aquaaston
instagram.com/aquaaston
twitter.com/aquaaston

AUSTRALIA/NEW ZEALAND

Linkd Tourism | Phone: +61.7.5568.6700
TOLL-FREE (Australia): 1300.329.912
TOLL-FREE (New Zealand): 0800.589.332
reservations@linkdtourism.com

JAPAN

Pacific Resorts, Inc.
TOLL-FREE (Japan): 0120.080102
Tokyo: +81.3.3544.5110
aquaaston@pacificresorts.com

KOREA

TAMS Inc.
Phone: +82.2.775.1500
chhong@tamsair.com